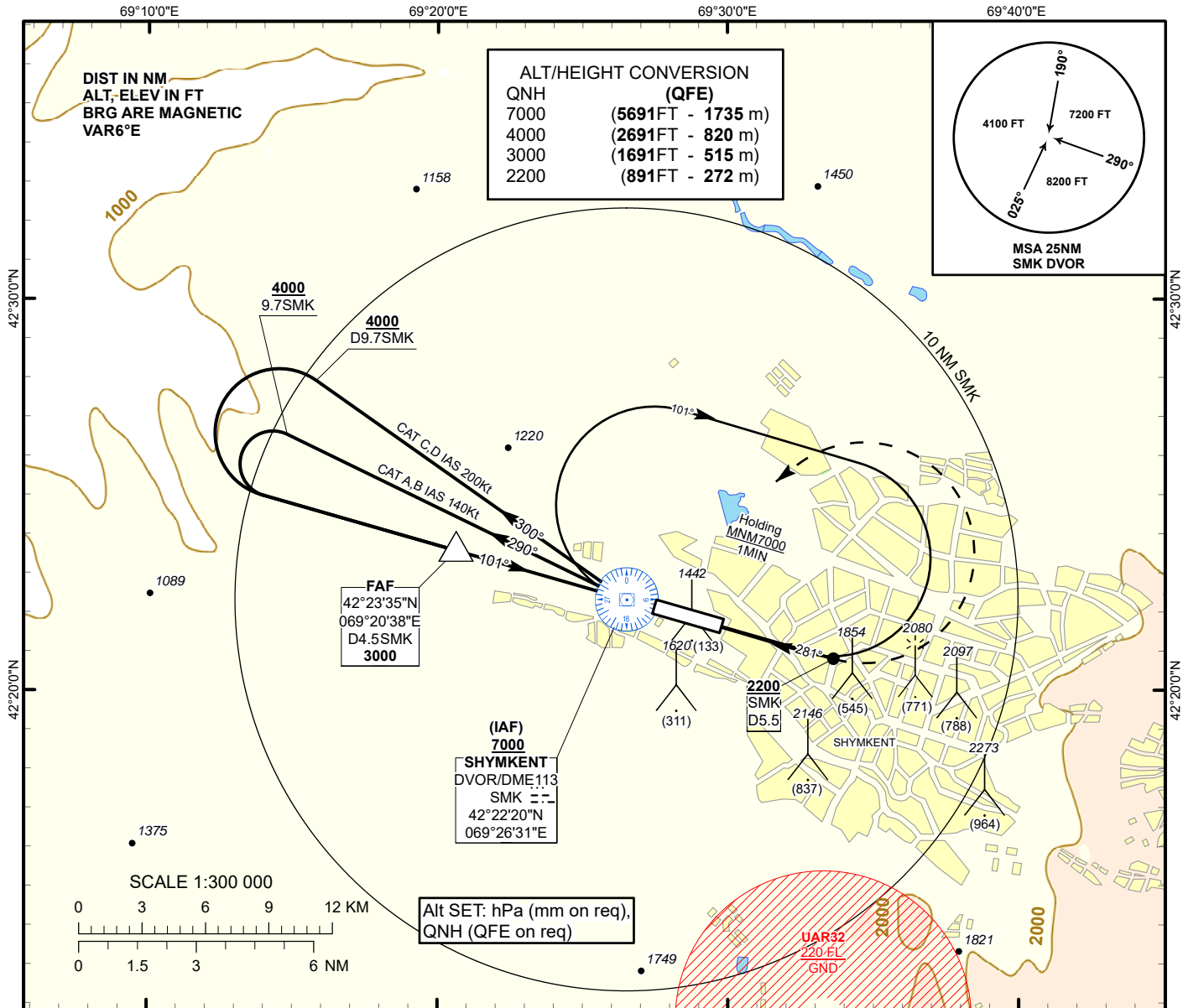


INSTRUMENT
APPROACH
CHART - ICAO

AERODROME ELEV 1387FT
HEIGHTS RELATED TO
THR RWY10 - ELEV 1309FT

SHYMKENT TOWER 125.9
SHYMKENT ATIS (EN) 119.2
SHYMKENT ATIS (RU) 126.6

SHYMKENT
VOR/DME Z
RWY 10

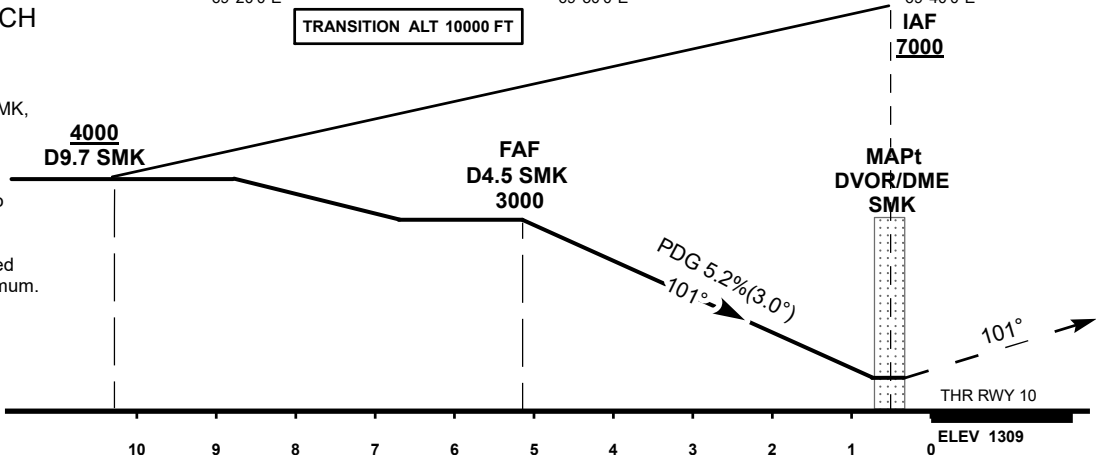


MISSED APPROACH

Climb on track 101°
to 2200 or above,
then turn LEFT to SMK,
but not less than 5.5 nm SMK,
Climb initially to 4000,
then as directed by ATC.

RADIO FAILURE

In the case of RCF climb to
7000 to SMK and join to
holding pattern.
Missed approach turn speed
limited to 250 Kt IAS maximum.



Aircraft Category		A	B	C	D	DIST to THR	NM	5.2	4	3	2	1	
Straight-in Approach OCA/H						DME SMK	NM	4.5	3.3	2.3	1.3	0.3	
	VOR/DME	1670 (360)	1670 (360)	1670 (360)	1670 (360)	ALTITUDE	FT	3000	2632	2313	1995	1676	
						HEIGHT	FT	(1691)	(1323)	(1004)	(686)	(367)	
Aerodrome Operating Minima MDH ft x RVR (CMV)	VOR/DME												
						GS	Kt	80	100	120	140	160	180
						Desc.Rate(5.2%)	ft/min	420	530	630	740	840	950
						FAF-MAPt(4.5NM)	min:sec	3:23	2:42	2:15	1:56	1:41	1:30

SHYMKENT
VOR/DME Z

AERONAUTICAL DATA TABULATION

VOR approach to RWY10 from SMK DVOR/DME	
Fix/point	Coordinates
(IAF) SMK DVOR/DME	42° 22' 20.4"N 069° 26' 30.6"E
(FAF) D4.5 SMK	42° 23' 35.2"N 069° 20' 37.8"E
THR RWY 10	42° 22' 09.24"N 069° 27' 22.27"E
Final approach descent angle is 3°	